

Guide to interactive applications

Head First

Puzzles and games on the interactive floor

Designer: LavaVision



Head First are Motioncube applications designed for interactive floors. The applications are controlled by **interactive pens**. The interactive area can be splitted into three game boards.

Number of applications in the package: 12

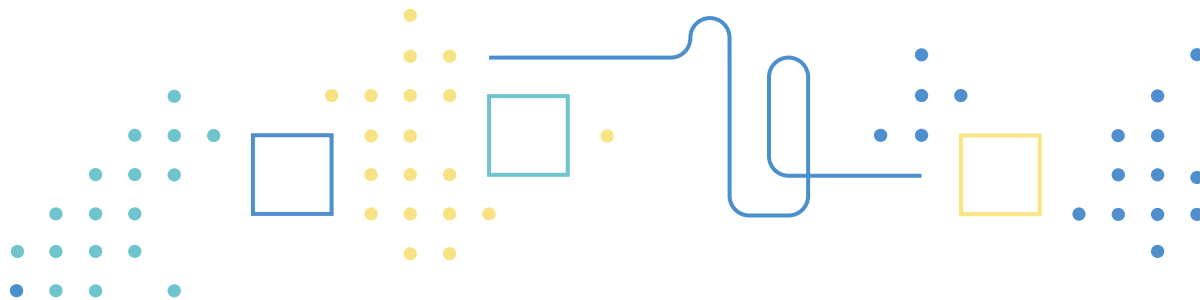
Application control method: interactive pens

Design, graphics, software: LavaVision

Package release date: 2017-06-01

Update: 2018-09-01

Motioncube is an interactive software that combines motion and fun in the innovative technology of the interactive floor. Motioncube applications are designed for entertainment education, revalidation, rehabilitation. Dozens of games controlled by motion, touch, interactive pens, robots, as well as for PCs and interactive boards. Along with example lesson or activity plans. Quick and easy selection of games collections with delivery straight to the interactive device. Create the interactive space tailored to your needs with Motioncube.



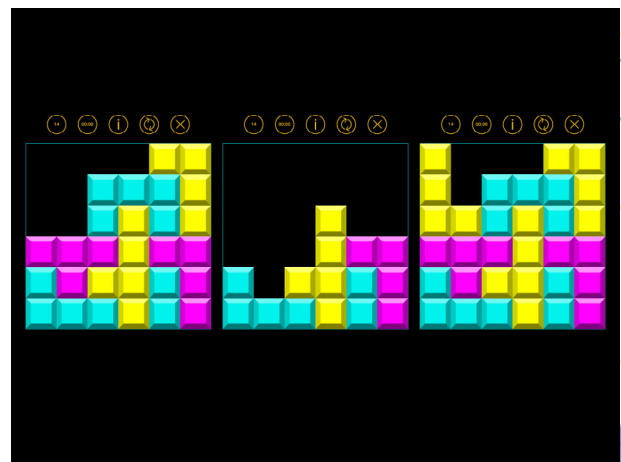
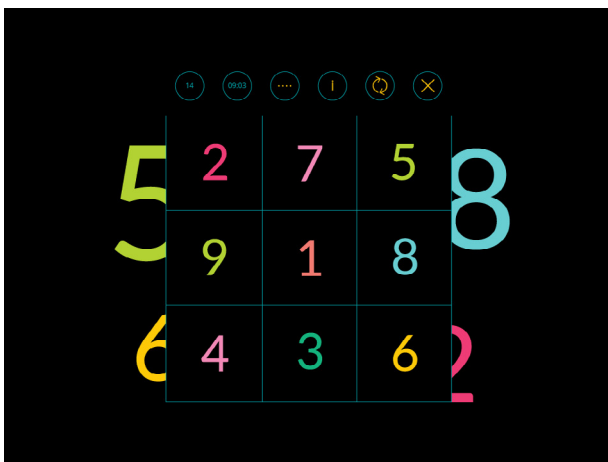
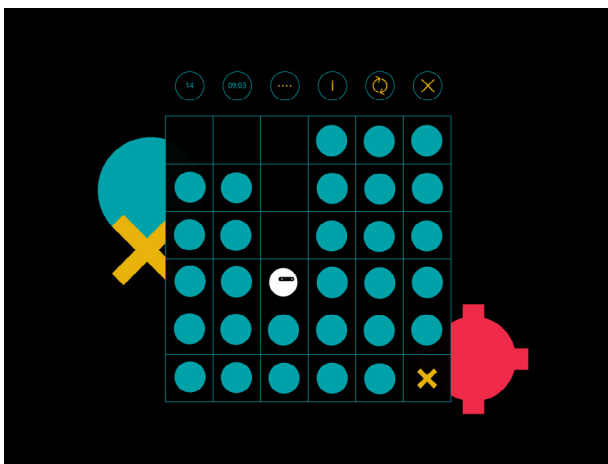
LavaVision

www.lavavision.eu

contact@lavavision.eu

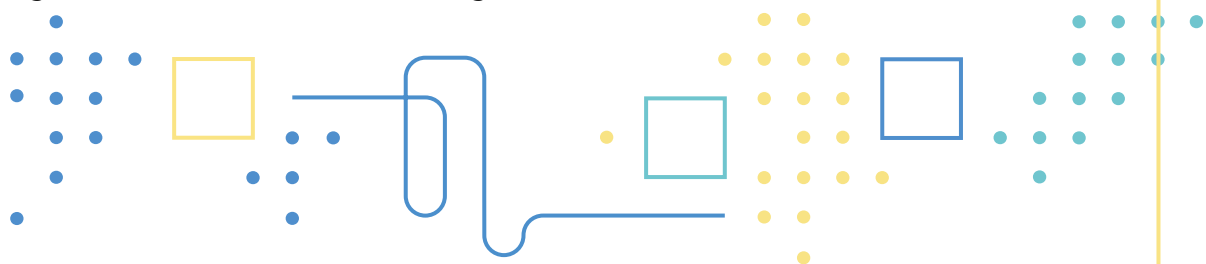
Train your memory and logical thinking!

Time to train your mind. In this game collection you get a large portion of interactive puzzles. Using interactive pen you will move tiles, turn numbers or pictures, mark fields, show the way. Goal - solve the problem!. Select the game level and start to play. This is a great way to get rid of boredom and practice your logical thinking. See how many iconic games are included in Head First!



Who is it for?

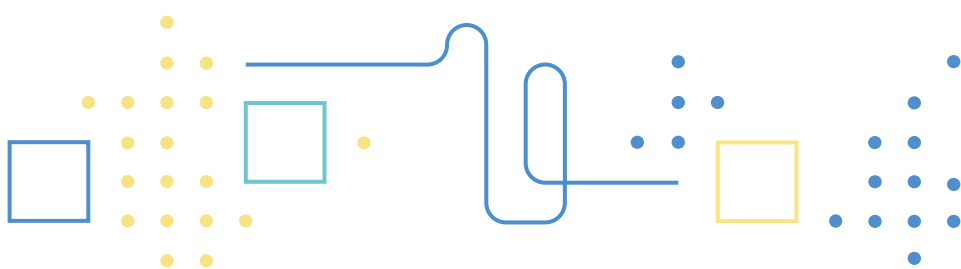
The Head First application set may complement everyday educational activities for schoolchildren, as well as corrective and compensatory, revalidation and didactic classes. It can also make the time spent by children in school day-care centers, educational institutions, institutions organizing children's free time, and at home more attractive. The proposed games are perfect for students and adults. We recommend them to all lovers of puzzles. These are mostly single-player games, with the possibility of dividing the board into two or three games.



What are the objectives of these activities?

The games included in Head First provide opportunities to stimulate logical thinking. While working with applications, you can develop various areas of cognitive development of students, in particular strategic thinking and understanding the rules of games and activities. In all the proposed games, you can practice your planning and foresight skills. In addition, games are an excellent intellectual entertainment that brings joy and satisfaction. We also practice hand-eye coordination, memory and perceptiveness.

The authors of the package tried to respond to the developmental needs of school-age children, focusing primarily on supporting motor and sensory skills during organized and safe games and plays.



What is inside?

Head First include twelve games that refer to well-known logical games and puzzles, such as Tic-Tac-Toe, Memory or Minesweeper. The games have different levels of difficulty to choose from. There is the possibility of dividing the board into two or three different games.

Child development support

The applications included in the package have been developed in cooperation with teachers and psychologists. Interactive games and exercises can perfectly enrich group class scenarios as well as individual exercises.

While playing games from Head First, you can practice:

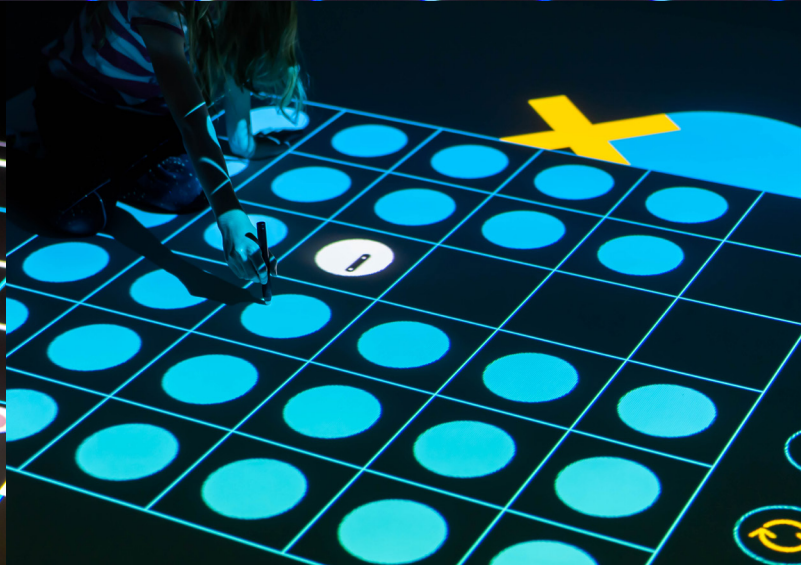
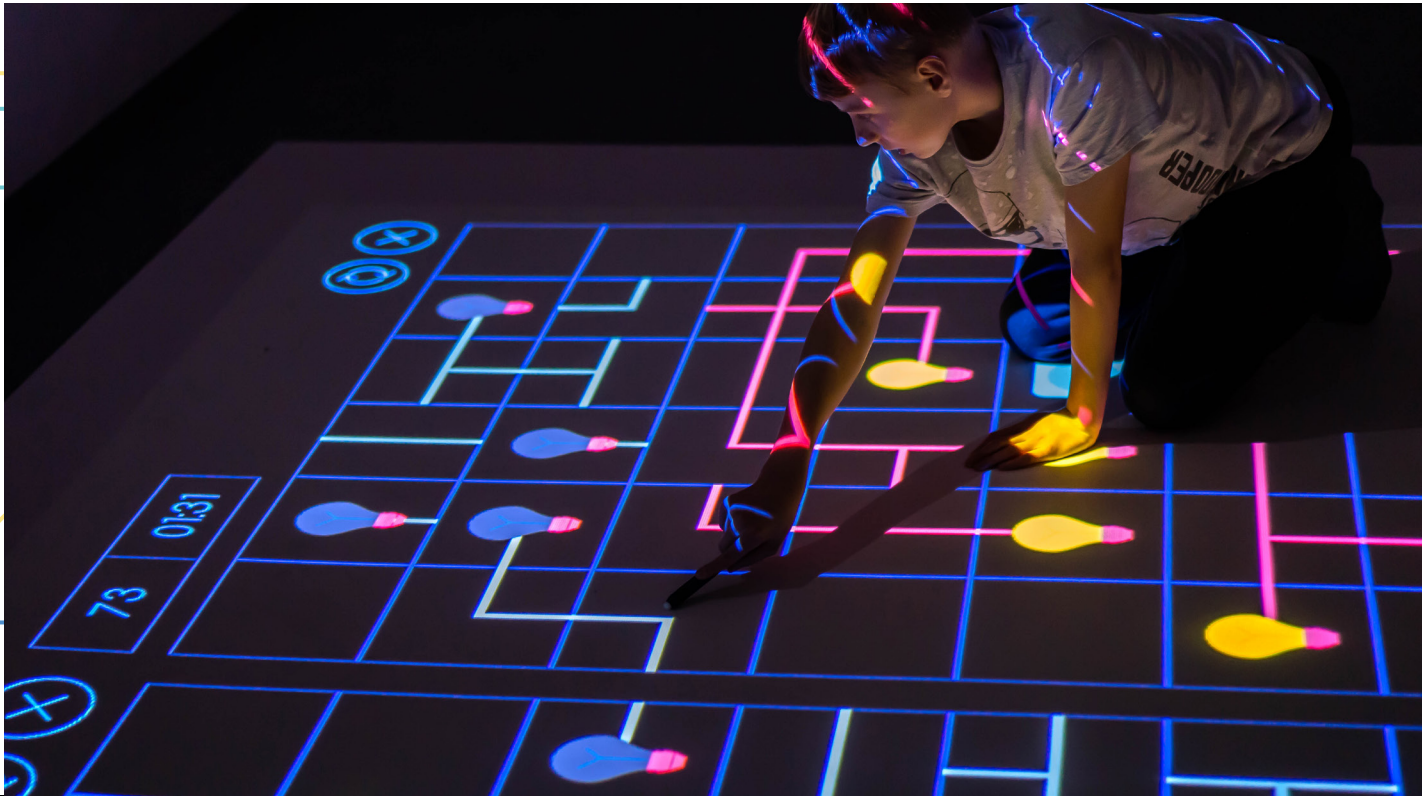
- logical and strategic thinking;
- eye-hand coordination;
- concentration of attention;
- planning and foresight skills;
- visual perception and cause and effect thinking;
- cooperation and competition;
- understanding and following the rules;
- understand basic mathematical concepts and operations.

Fun with the Head First on the Motioncube interactive floor

You can run the Head First games on the interactive floor with Motioncube Player available on www.motioncube.io

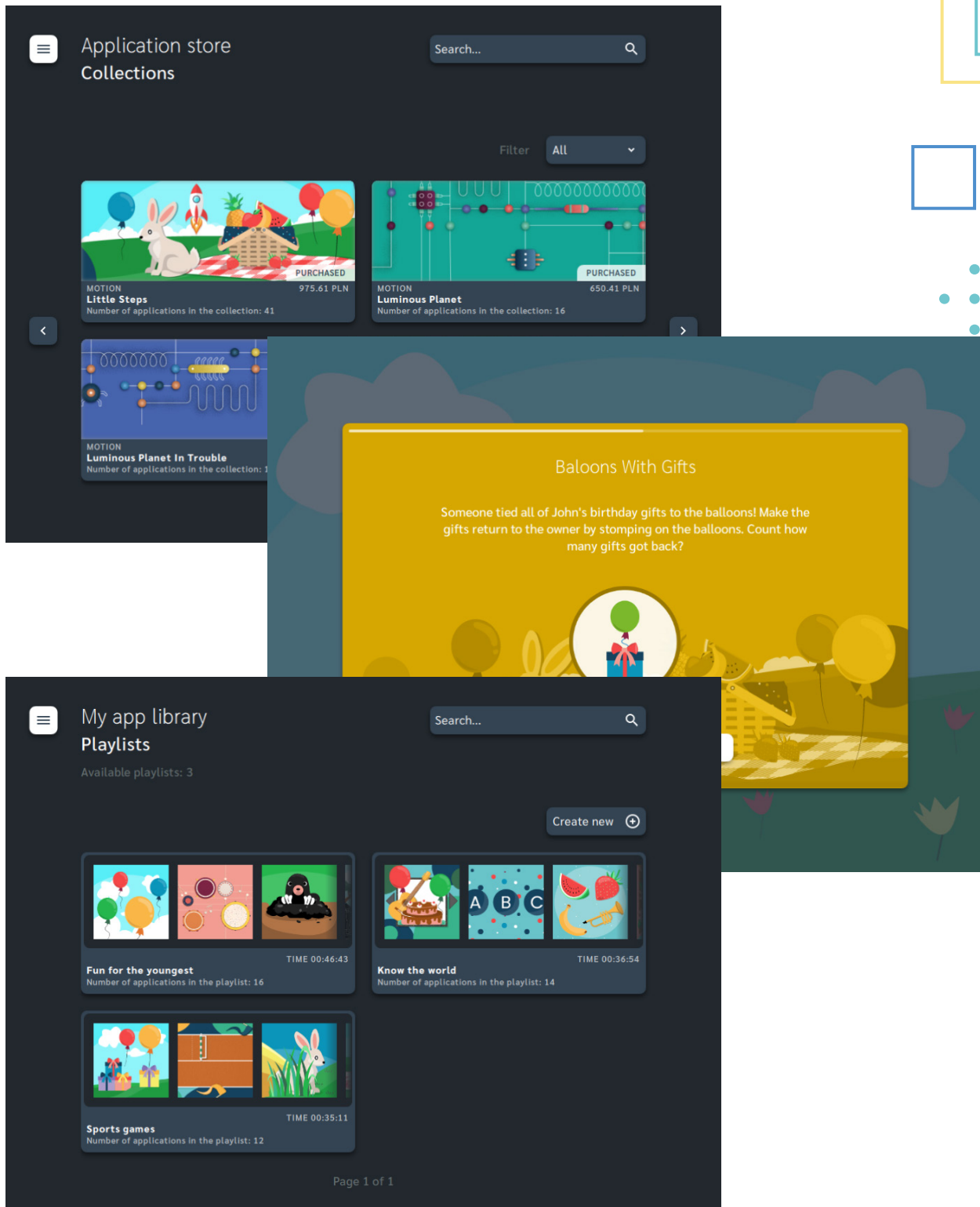


See video



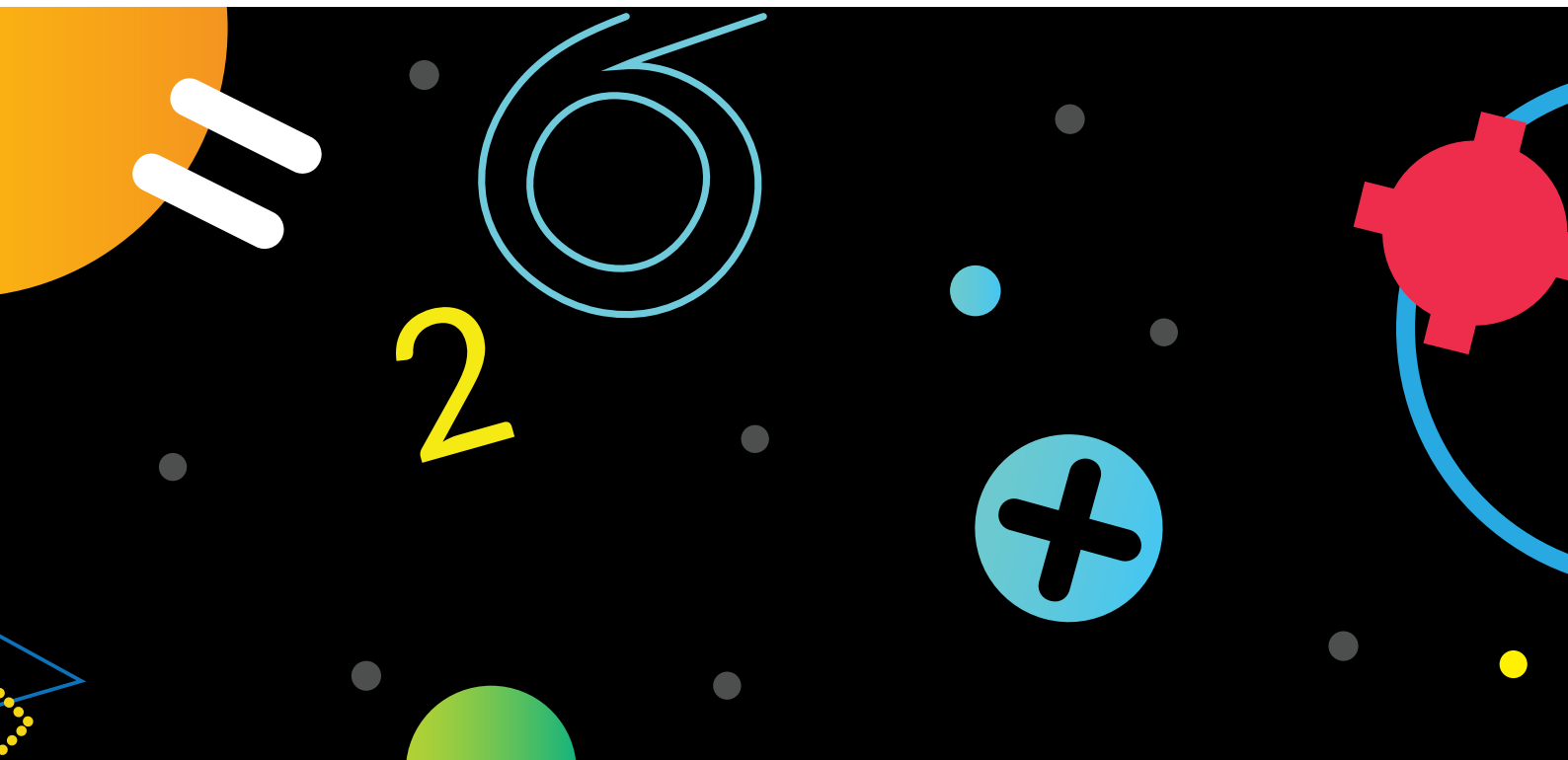
Motioncube Player

With Motioncube Player, you can easily manage your App Library, update your app collections, run playlists, and access a wide offer of educational interactive games.

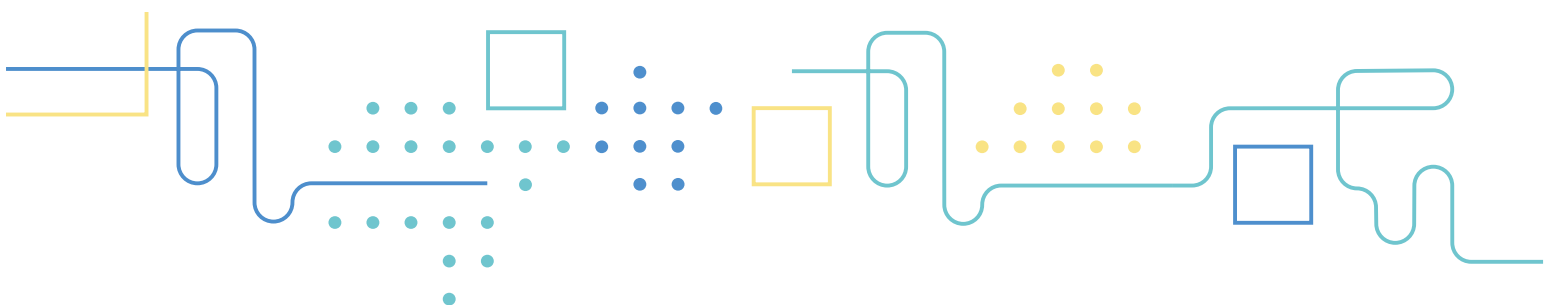


Why to choose Head First games?

- Support the development of your students' logical thinking in a large, graphically attractive format;
- Enjoy the well-known and proven games and activities that will never get boring;
- You can run three games at the same time;
- Perfect entertainment for every student;
- Ergonomic, intuitive interface and simple to use.



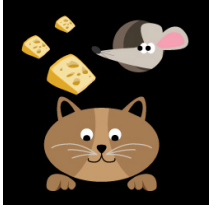
Think and move, try to solve it out!



motioncube.io

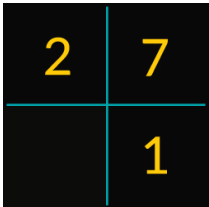
The Head First include twelve games

1. Cheesy Maze



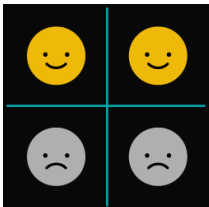
Lead the mouse to the burrow where mom is already waiting for her! Avoid the walls of the maze, collect all the pieces of cheese and try to do it as quickly as possible! Educational fun for children at the early school age. Possibility to play for one, two or three players at the same time.

2. Fifteen



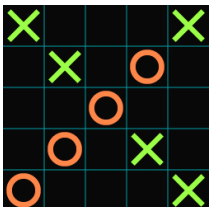
Sliding number puzzle. Use the free space to move the tiles to put them in the correct order from 1 to 15. A puzzle game for early school and school children, teenagers and adults. Possibility to play for one, two or three people at the same time.

3. Flip To Smile

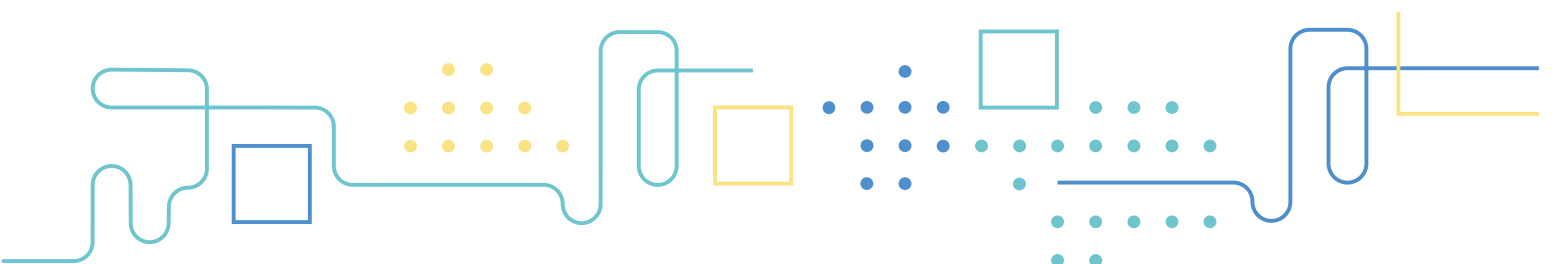


Smile! Click on the squares and change the faces to smiling faces. Remember, by changing one face, you will also change the faces around her. Make the whole board in smiles! A puzzle game for early school and school children, teenagers and adults. Possibility to play for one, two or three people at the same time.

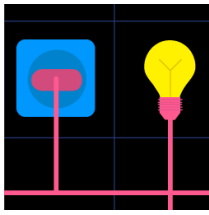
4. Gomoku



Play a more difficult version of the well-known and popular Tic-Tac-Toe puzzle game on a 15x15 board. Match up in pairs and see who will be able to make 5 crosses or circles in one line first. A strategy game for early school and school children, teenagers and adults. Possibility to play for one, two or three pairs of players at the same time.

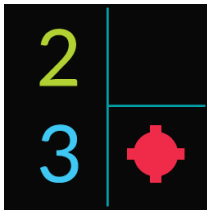


5. Light On!



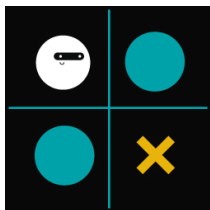
Connect the wires to turn on the bulbs and light up the entire floor! Rotate squares to connect the wires. You can choose the difficulty level that is right for you. A puzzle game for early school and school children, teenagers and adults. Possibility to play for one, two or three people at the same time.

6. Minesweeper



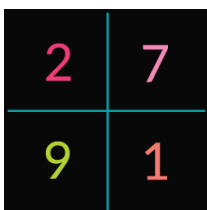
Geometric puzzle. Mark fields on the board by creating rectangles or squares so that each rectangle contains only one number and exactly as many squares as indicated by this number. A puzzle game for early school and school children, teenagers and adults. Possibility to play for one, two or three people at the same time.

7. Moby Goes Out



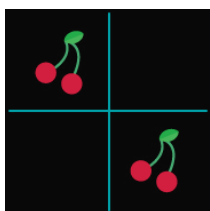
Lead Moby to the finish line! Remember where the traps are and then choose the right path. You can choose the difficulty level that is right for you. A puzzle game for early school and school children, teenagers and adults. Possibility to play for one, two or three people at the same time.

8. Numbers Twiddle



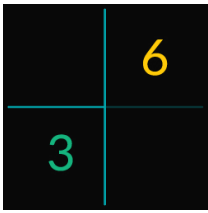
Put the numbers in the right order - from lowest to highest! Rotate four tiles at once by moving them relative to the center. You can choose the difficulty level that is right for you. A puzzle game for early school and school children, teenagers and adults. Possibility to play for one, two or three people at the same time.

9. Picture Memory



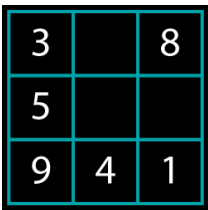
Exercise your memory! Play a popular game that will keep you entertained for a long time. Discover the square, see what it shows, and then find the same picture on the board. You can choose the difficulty level that is right for you. A puzzle game for early school and school children, teenagers and adults. Possibility to play for one, two or three people at the same time.

10. Rectangles



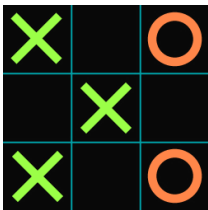
Geometric puzzle. Mark fields on the board by creating rectangles or squares so that each rectangle contains only one number and exactly as many squares as indicated by this number. A puzzle game for early school and school children, teenagers and adults. Possibility to play for one, two or three people at the same time.

11. Sudoku



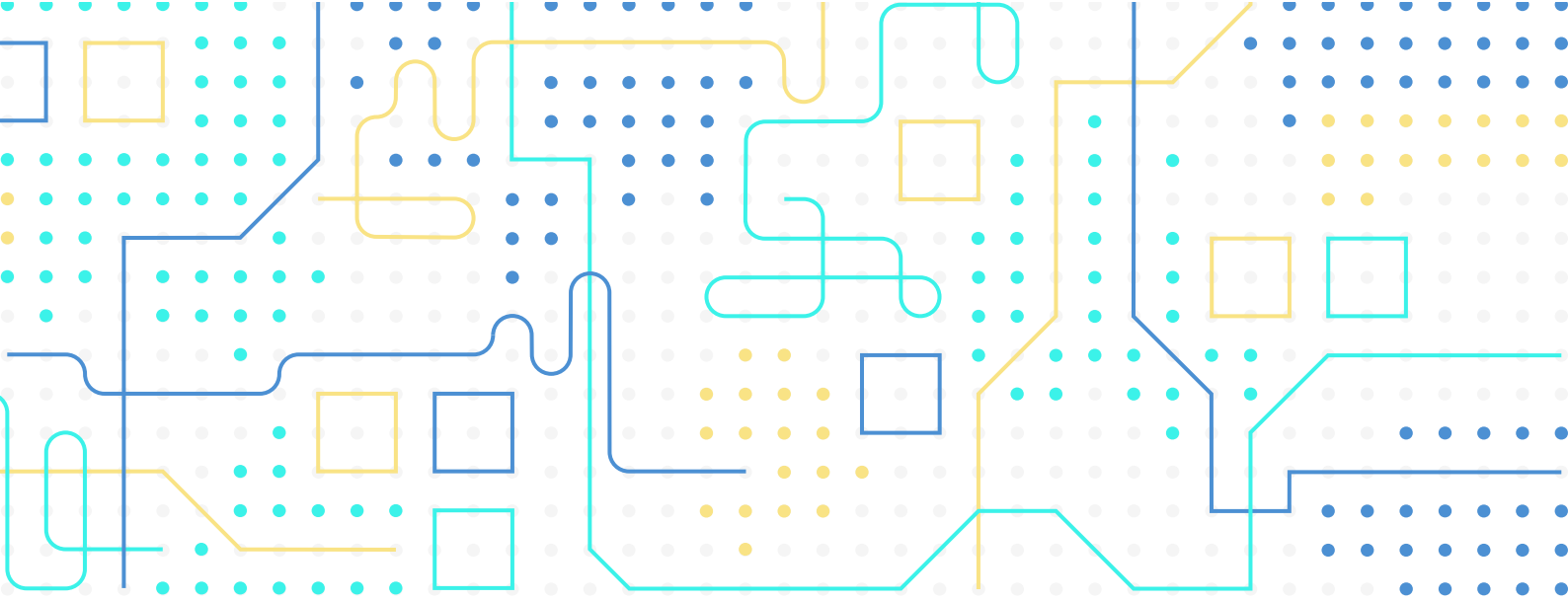
Play famous and popular sudoku! Fill in the square so that there is one number from 1 to 9 in each small square, column and row. You can choose the difficulty level that suits you best. A puzzle game for early school and school children, teenagers and adults. Possibility to play for one, two or three people at the same time.

12. Tic Tac Toe



A classic among games in pairs. Match up in pairs and play the classic version of the well-known and popular Tic-Tac-Toe puzzle game on a 3x3 board. A strategy game for early school and school children, teenagers and adults. Possibility to play for one, two or three pairs of players at the same time.

Head First!
Think and move, try to solve it out!



Check more on
www.motioncube.io

