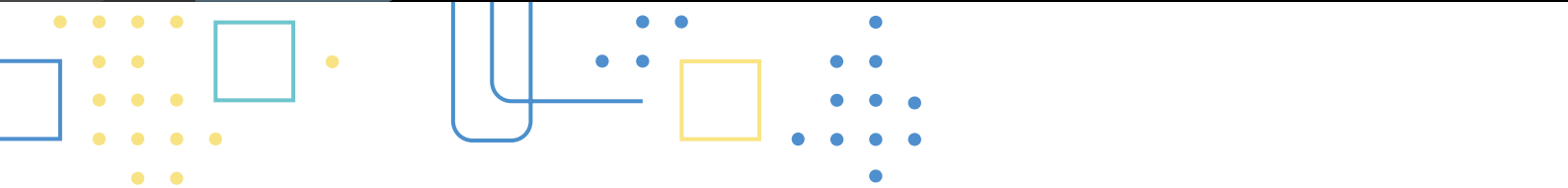
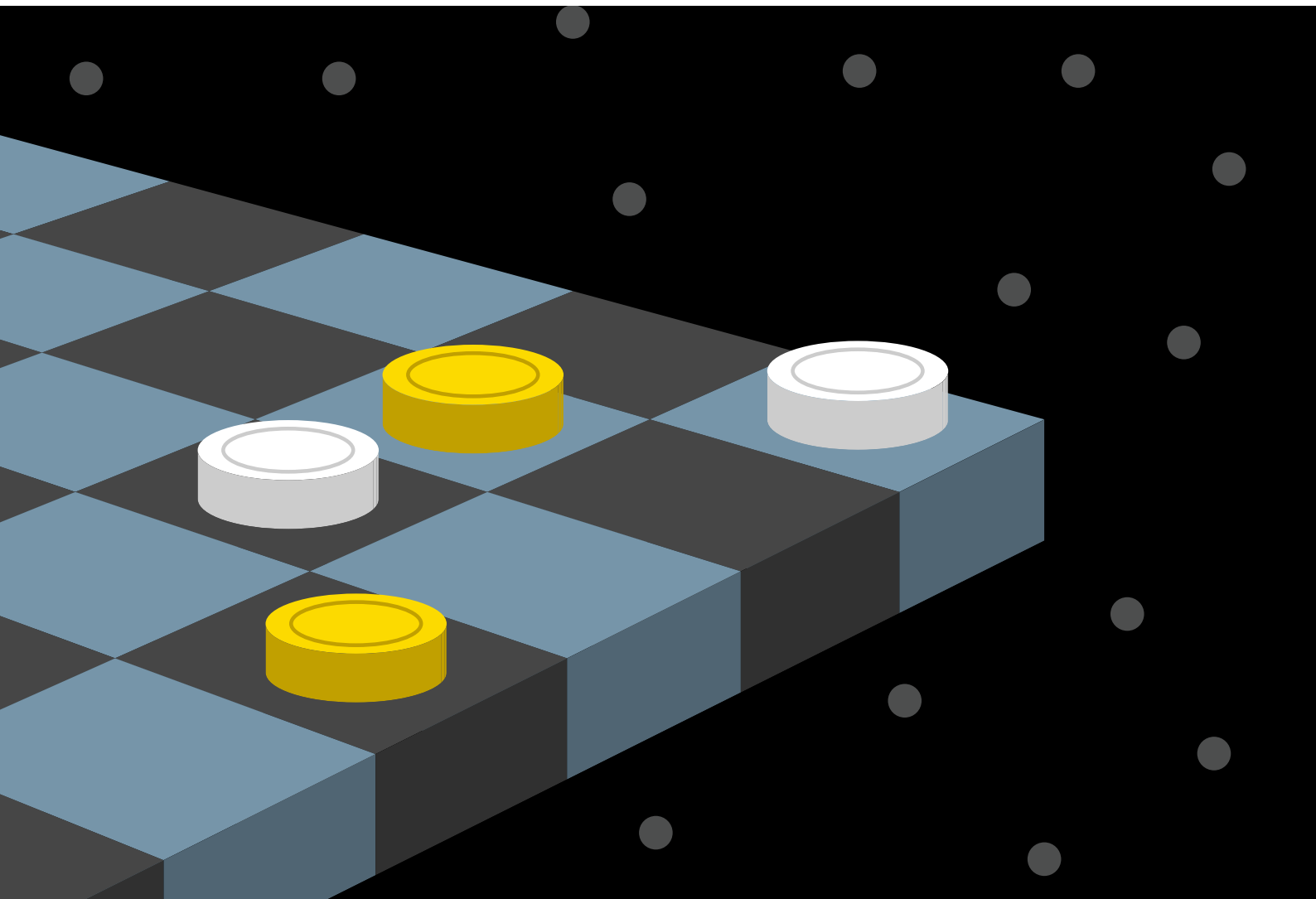


Guide to interactive applications

# Chessboard Funs

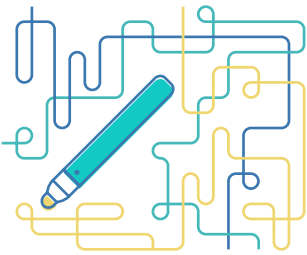
Chess games on the interactive floor

Designer: LavaVision

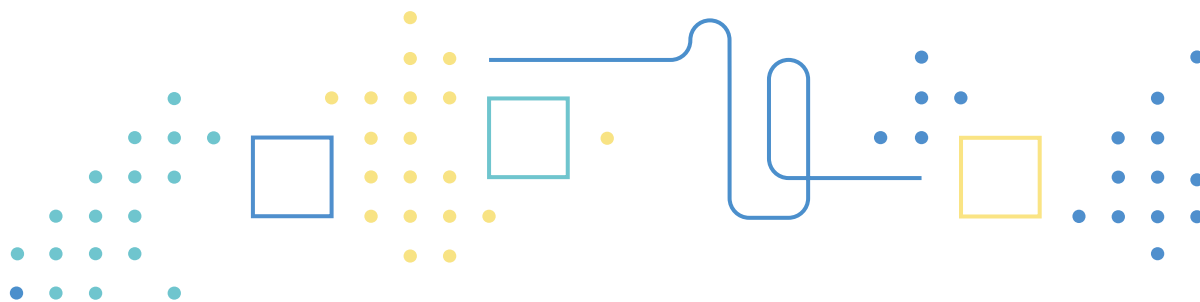


**Chessboard Funs** are Motioncube applications designed for interactive floors. The applications are controlled by **interactive pens**.

Number of applications in the package: 4  
Application control method: interactive pens  
Design, graphics, software: LavaVision  
Package release date: 2020-07-08  
Update: 2018-09-01



Motioncube is an interactive software that combines motion and fun in the innovative technology of the interactive floor. Motioncube applications are designed for entertainment, education, revalidation, rehabilitation. Dozens of games controlled by motion, touch, interactive pens, robots, as well as for PCs and interactive boards. Along with example lesson or activity plans. Quick and easy selection of games collections with delivery straight to the interactive device. Create the interactive space tailored to your needs with Motioncube.



**LavaVision**

Krakow, 31-866

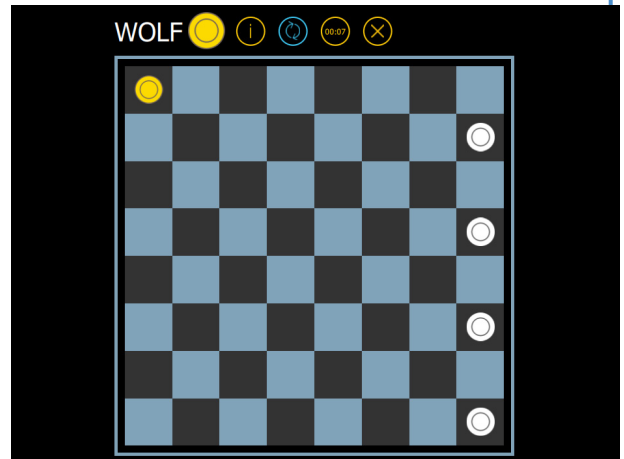
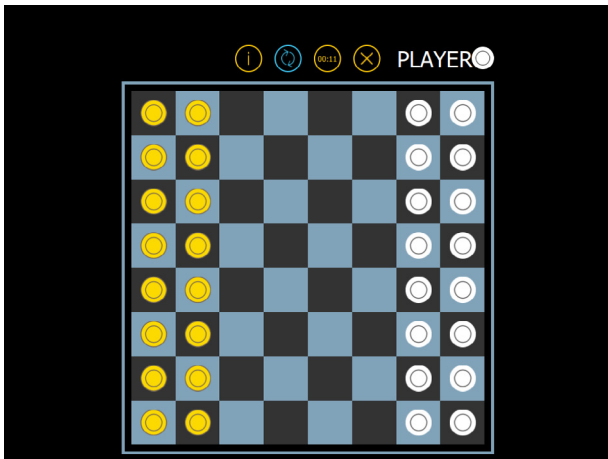
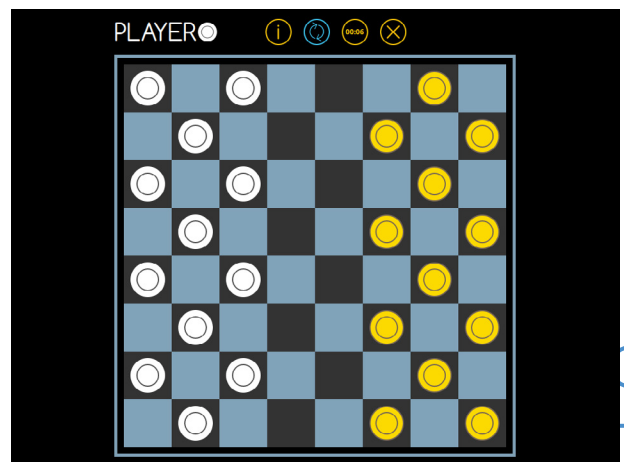
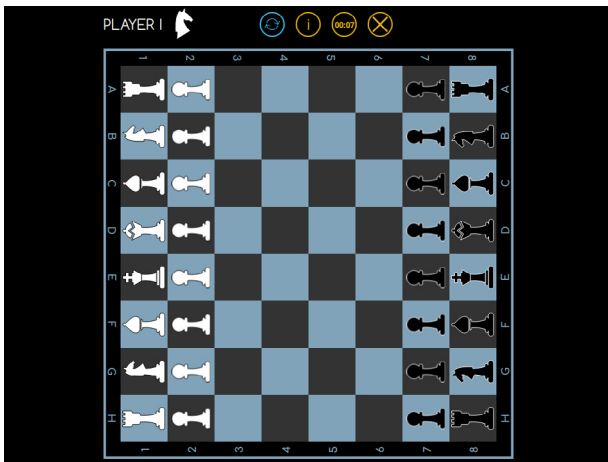
Skarzynskiego St. 5/07, Poland

[contact@motioncube.io](mailto:contact@motioncube.io)

[www.motioncube.io](http://www.motioncube.io)

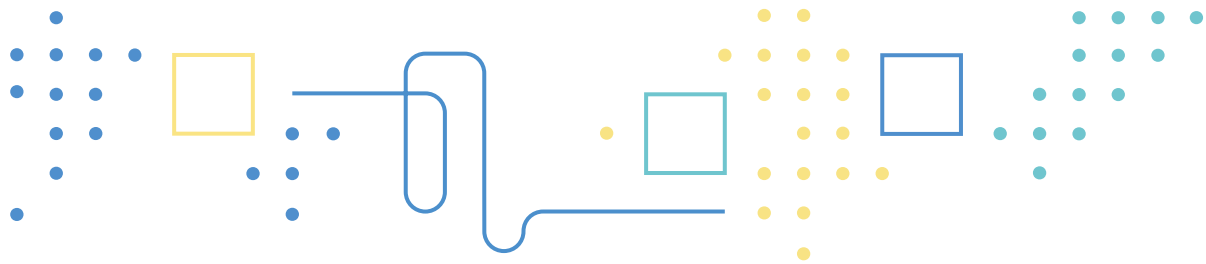
# Checkmate!

Welcome to the royal battlefield - chessboard! Here the King rules and the faithful Hetman is his unsurpassed defender. Join the King's army and fight for the victory. Chessboard Fun is a set of four chess games that teach abstract and logical thinking, encourage risk taking, practice perceptiveness and improve analytical skills. These are timeless mind sports games for two.



## Who is it for?

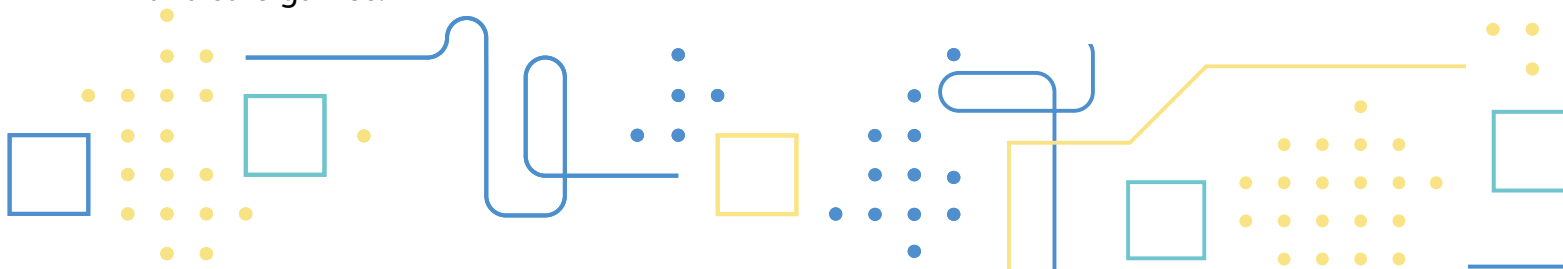
Chessboard Funs applications can complement everyday educational activities for children in kindergarten, early school or school age, as well as corrective, compensatory and revalidation classes. They can also make the time spent by children of all ages more attractive in day-care centers, educational institutions, community centers and at home. The Chessboard Funs game collection is especially suitable for lovers of chess games and anyone who would like to try their hand at it. The games are designed for two people, but thanks to the large format of the board, you can successfully organize the game in a larger group.



## What are the objectives of these activities?

The package may support the child's activity, by developing mental cognitive processes such as logical, cause-effect and algorithmic thinking. The games included in the collection stimulate the areas of cognitive development of students, with particular emphasis on strategic thinking and understanding the rules of games and competition. Chess games provide unlimited possibilities for taking initiative, developing fantasy and spatial imagination, memory and concentration, and above all, they create situations that require abstract and logical thinking.

The authors of the package tried to respond to the developmental needs of school-children, focusing primarily on supporting motor and sensory skills during organized and safe games.



## What is inside?

The Chessboard Funs set contains four games on 8x8 boards. These are classic chess games: chess, knights, wolf and sheep, draughts.

## Child development support

The applications included in the package have been developed in cooperation with teachers and psychologists. Interactive games and exercises can perfectly enrich group class scenarios as well as individual exercises.

Working with the application of the Checkerboard package, you can shape:

- visual perception;
- logical and strategic thinking;
- spatial imagination and abstract thinking;
- memory and concentration of attention;
- taking initiative and risk;
- understanding and following the rules;
- awareness of experienced emotions and the ability to control them and express them in a way that allows cooperation in a group.

## Fun with the Chessboard Funs on the Motioncube interactive floor

You can run the Chessboard Funs games on the interactive floor with Motioncube Player available on [www.motioncube.io](http://www.motioncube.io)

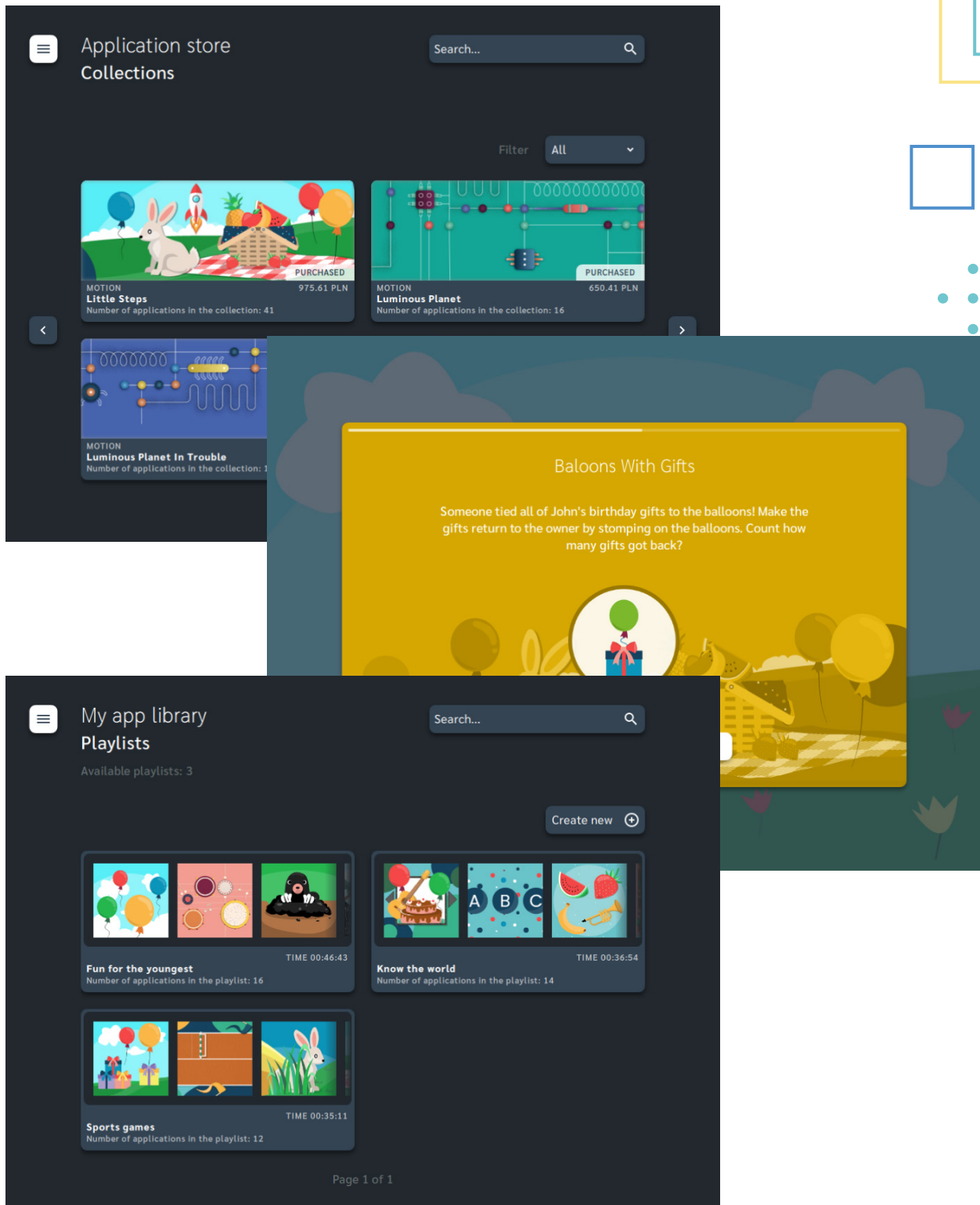


See video



# Motioncube Player

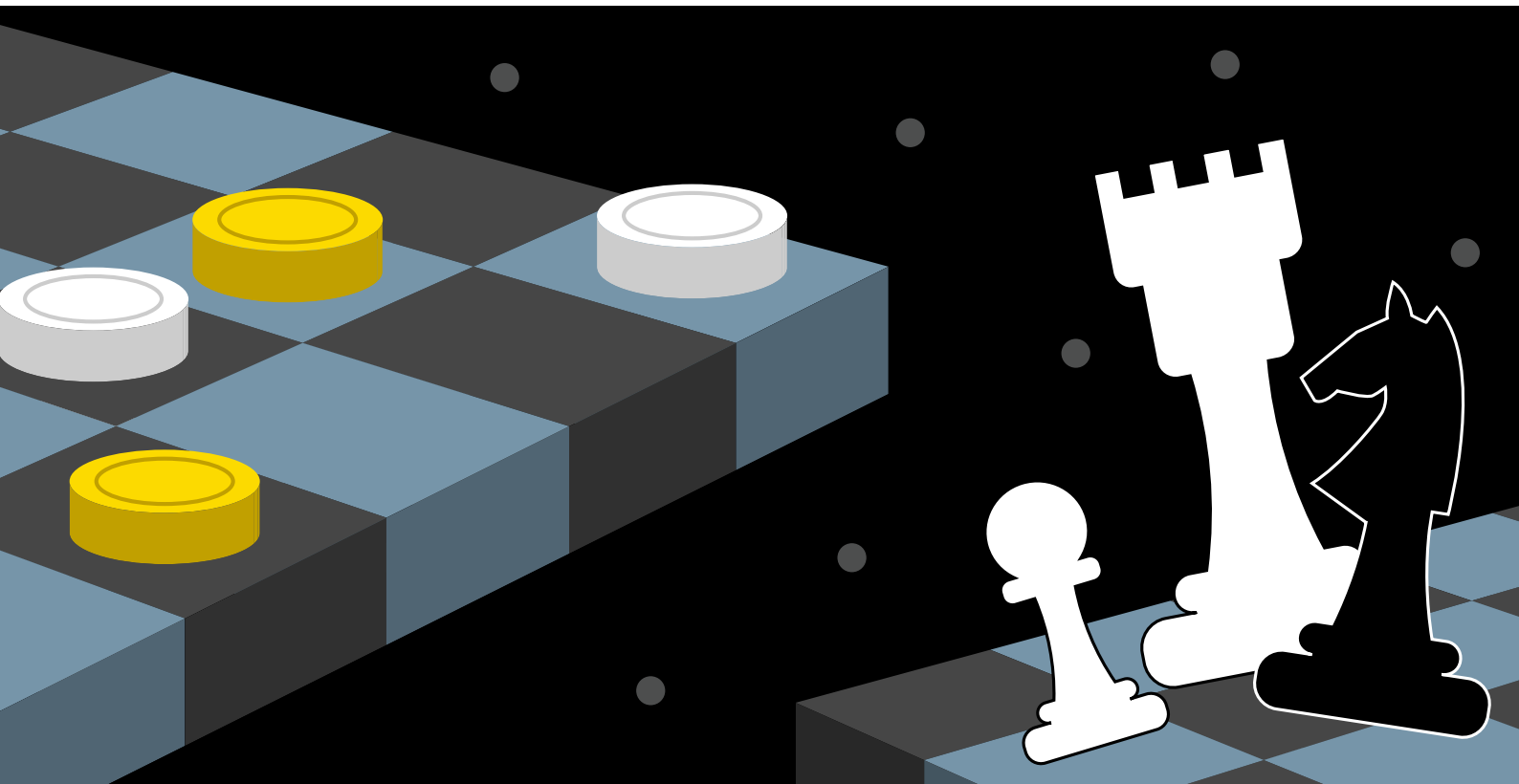
With Motioncube Player, you can easily manage your App Library, update your app collections, run playlists, and access a wide offer of educational interactive games.



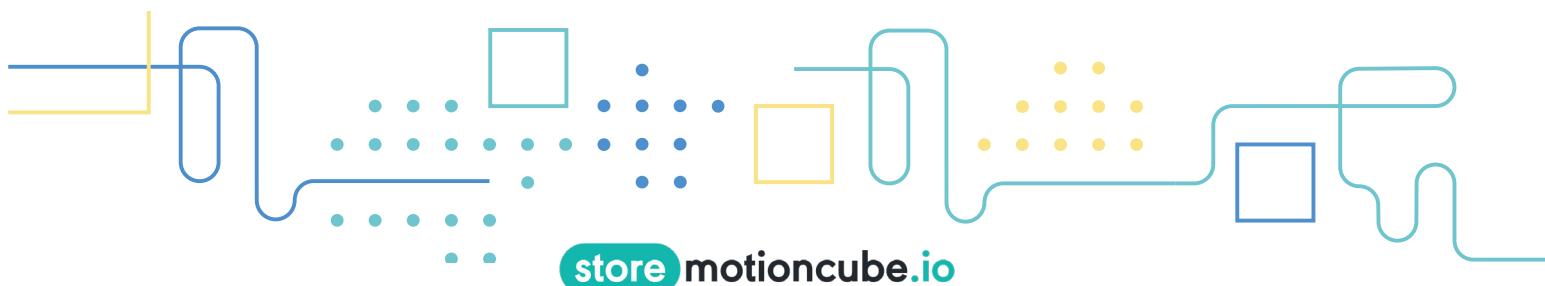


## Why to choose the Chessboard Funs?

- It is a valuable proposition to be used by teachers in various forms of classes and for different age groups;
- Support the development of your students' abstract and analytical thinking;
- It provides comprehensive development and stimulating entertainment for everyone;
- Intuitive interface, simple to use;
- The chess pieces will never get lost.



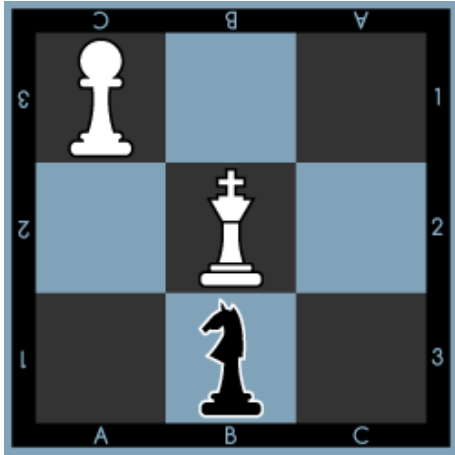
Every move on the chessboard makes you more experienced!





## The Chessboard Funs include four games

### 1. Chess



Number of boards: 1

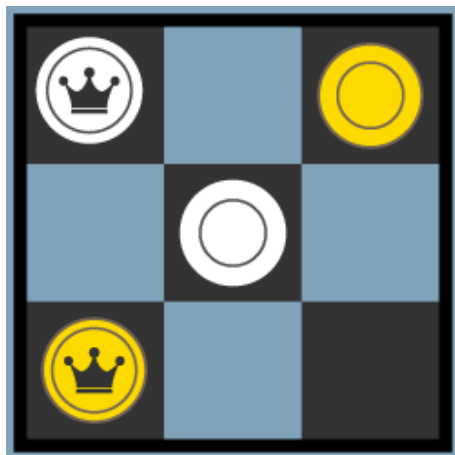
Players: 2

Age: +7

Time > 20 min

Checkmate! Play the queen of all board games! Rearrange your pieces with the felt-tip pen and make the opponent's king unable to move. Learn how all the pieces move and train your strategic skills. A strategic chess game for early school and school children, teenagers and adults, for two players.

### 2. Draughts



Number of boards: 1

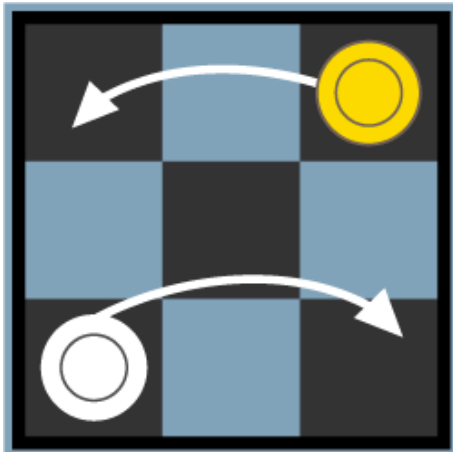
Players: 2

Age: +7

Time > 20 min

Time to play draughts! Capture your opponent's pieces or block them effectively! Remember that pieces can only move diagonally one square forward. To work! A strategic chess game for early school and school children, teenagers and adults, for two players.

### 3. Knights



Number of boards: 1

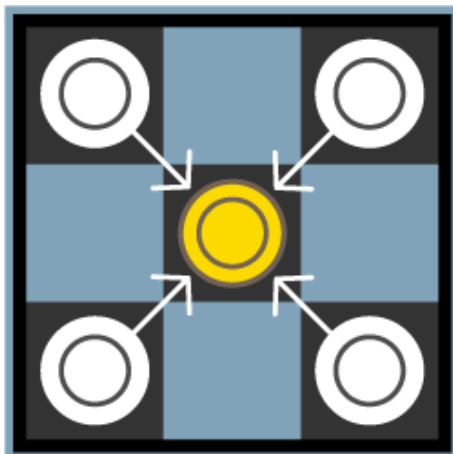
Players: 2

Age: +7

Time < 20 min

Play the Knights on the board! Jump forward, backward, left or right! Use the light pen to move all your pieces to the positions taken by your opponent at the beginning of the game. The first one is the winner! A strategic chess game for early school and school children, teenagers and adults, for two players.

### 4. Wolf And Sheep



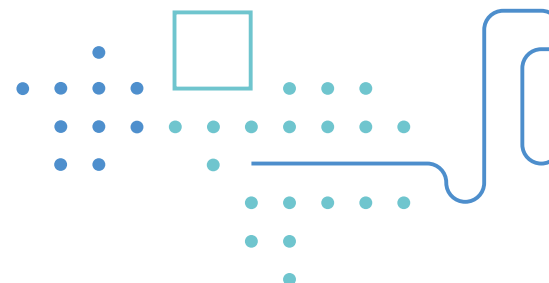
Number of boards: 1

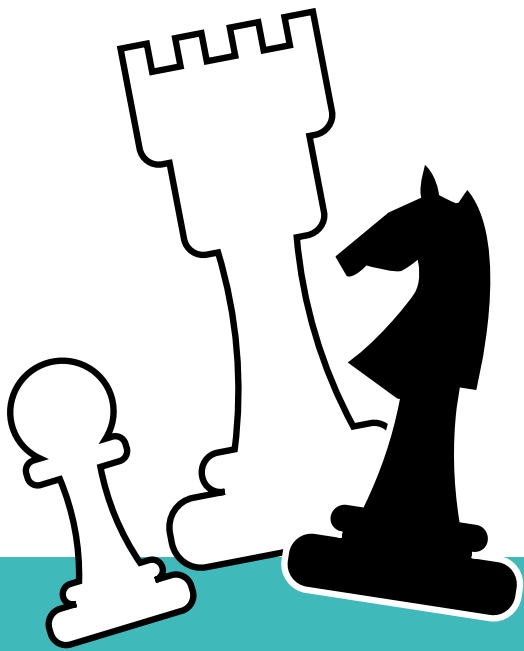
Players: 2

Age: +7

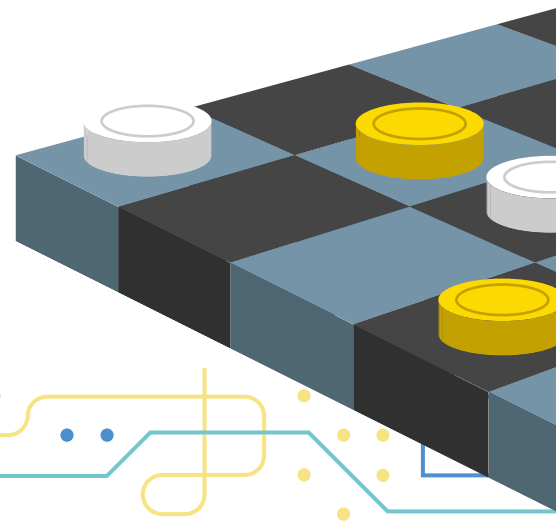
Time < 10 min

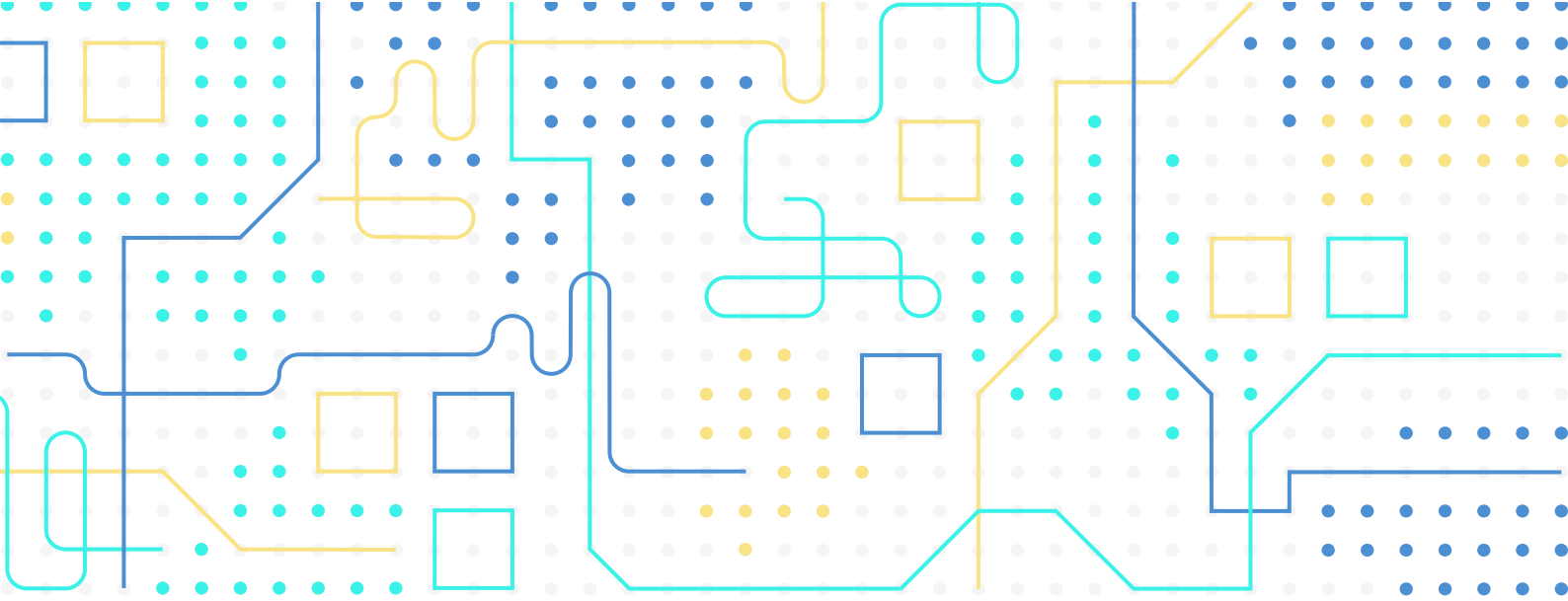
Take on the role of a wolf or sheep on the chessboard! The wolf must get to the first row of fields. The sheep must block the wolf so that it cannot make a move. Which role do you choose? A strategic chess game for early school and school children, teenagers and adults, for two players.





Checkmate!  
Every move on the chessboard makes you more experienced!





Check more on  
[www.store.motioncube.io](http://www.store.motioncube.io)

